

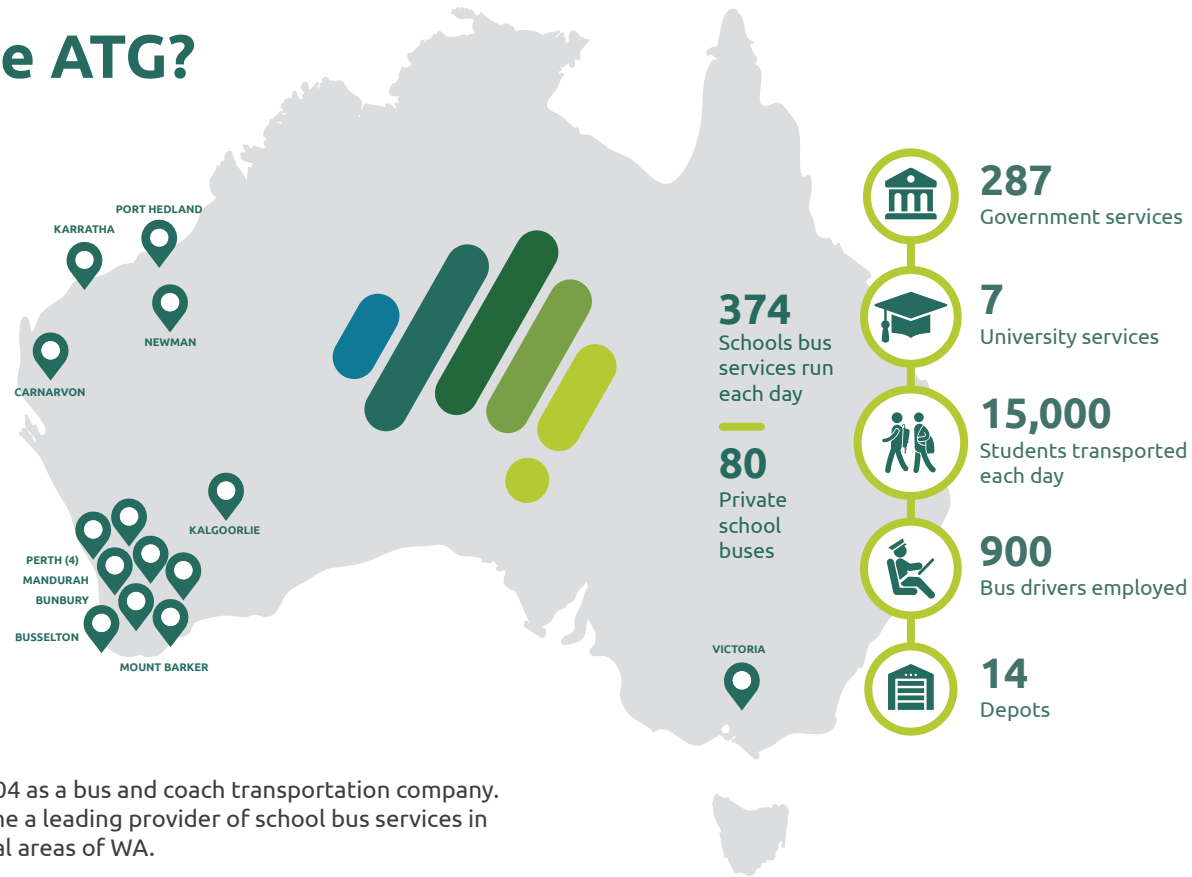


Guide to



Establishing Bus Services for a School

Who are ATG?



ATG started in 2004 as a bus and coach transportation company. It has since become a leading provider of school bus services in urban and regional areas of WA.

BUSWEST

ATG
DOWNUNDER

QUINCES

SOUTH WEST
COACH LINES

GANNAWAYS
CHARTERS & TOURS

PILBARA
CAR & TRUCK RENTALS



Why run a bus service?



Safety

Ensures safe and reliable transportation for students, minimising accidents and incidents.



Accessibility

Offers learning prospects to pupils in areas with transportation difficulties, and to those dependent on wheelchairs.



Reliability

Reliable transportation helps improve punctuality and attendance.



Traffic

Reduces traffic around the school, making it safer and better organised.



Efficient

Using the bus saves parents time and money compared to driving their children individually.



Greener

Fewer cars on the road means less carbon emissions, leading to a more environmentally friendly world.



Community

Traveling together builds a sense of community and encourages social interaction among students.



New Enrolments

Operating a bus service broadens the student catchment zone for a school.

What's included in a school bus service



Bus tracking

Our buses have remote monitoring capabilities, allowing parents to track them using a mobile application.

Ticketing

We can install ticketing systems on buses to monitor authorised passengers.

Control Centre

Realtime notifications of services, including live alerts on onboarding and deboarding.

Booking portal

Access your upcoming bookings and account status, and teachers can check transport for excursions.

We recommend:

transportme[™]
OneCompleteSolution

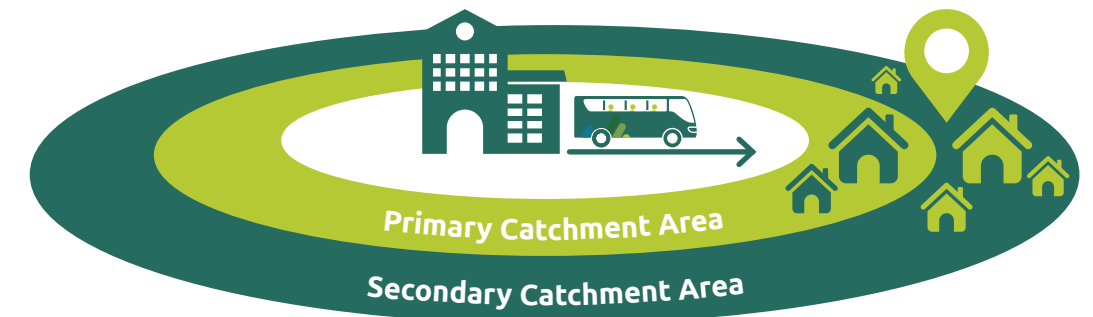
 **RollCall**

Using transport to attract new enrolments

Access to quality education is a critical issue.

A dedicated bus service can significantly extend the school's reach, making the institution accessible to students who reside in distant locations or in areas that are not adequately served by public transport. A school bus service can bridge the gap, ensuring education for all.

The school stands to gain from each new student enrollment, not just in terms of increased diversity and vitality within the student body, but also financially. Each additional enrolment generates extra income through school fees and attracts further funding from government contributions.



What makes us a safe operator



Policies & Procedures

We have developed robust policies to ensure our operations run smoothly and safely.



ISO Quality Standards

ATG is accredited to international quality and work health and safety standards and ensures all depots align with these standards through their integrated Quality Management System.



Driver qualifications

ATG have a strict onboarding process to hire skilled and committed drivers, with high standards for driving ability and mandatory checks for working with children.



Preventative maintenance

Maintenance is important for the longevity, safety, and efficiency of equipment, making it crucial for any operation.



Seat belts

Seat belts, once considered essential only in cars, are now standard in school buses, ensuring student safety. Their constant use is required according to our guidelines.



Bus aides

We have introduced the option of having a bus aide to effectively manage a bus full of energetic kids on school bus runs.

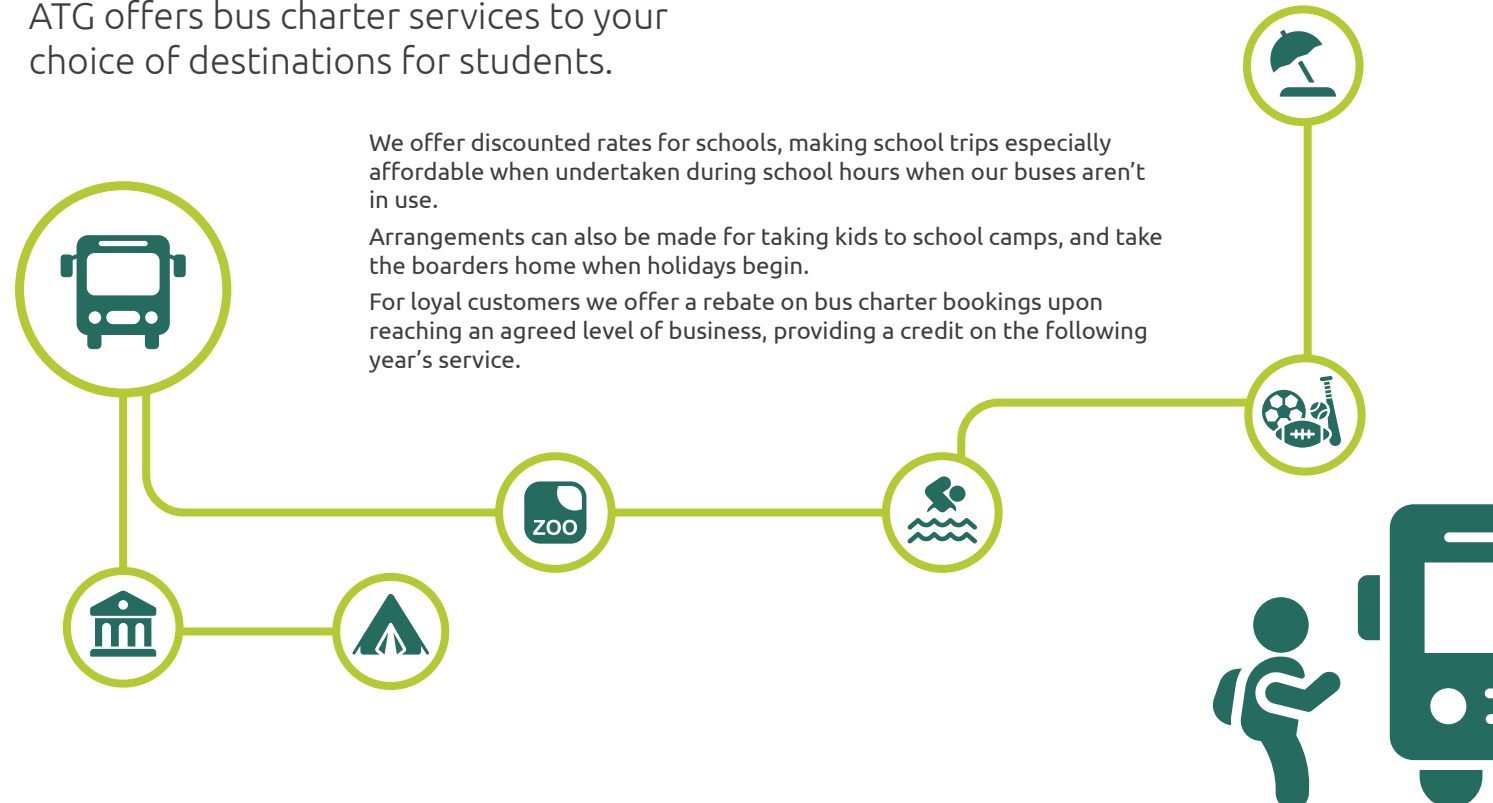
Trips and Excursions

ATG offers bus charter services to your choice of destinations for students.

We offer discounted rates for schools, making school trips especially affordable when undertaken during school hours when our buses aren't in use.

Arrangements can also be made for taking kids to school camps, and take the boarders home when holidays begin.

For loyal customers we offer a rebate on bus charter bookings upon reaching an agreed level of business, providing a credit on the following year's service.



Seven questions

to ask when considering a bus service

“

How quickly can we establish and commence a bus service?

We can start the service in two weeks if the vehicle is available, but usually, we require a month's notice for finalising the arrangements.”

1



Is a bus service required?

The school should survey parents to understand the demand for a school bus service, which will help determine the financial viability of providing transportation.

2



How much will it cost?

An estimated cost from ATG can be used to create a budget for investigating funding options from parent contributions and sponsorships.

3



Where should the bus route run?

Our nearest depot operations manager will assist in designing a route which considers travel time, school hours, and traffic patterns.

4



How do we test the route?

ATG will conduct a trial run of the route, address any issues, and make adjustments based on feedback, the result of which should be communicated to the school.



5



When do we announce the service?

With the service ready to start, all that remains is to lock in the start date. The initial few weeks will be monitored for schedule and safety compliance, and a feedback system implemented continuous improvement.

6



Who do we have to tell?

With the service locked in to commence, now is the time to announce the new school bus service, with the intention to to obtain a commitment from parents.

7



How do we work to improve?

We will continuously assess the service, gather feedback, and keep you informed about any changes needed for safety and compliance with industry standards and regulations.

Punctual and *reliable*

10 things that provide you with comfort and reassurance:

1. Local depot managers who are often less than 30 minutes away
2. Regular meetings and catch-ups to listen and inform
3. Dedicated operations team overseeing the hour-to-hour and day-to-day schedule
4. Depot based workshops ensuring repairs and maintenance are undertaken swiftly
5. Allocation of a regular friendly driver to provide comfort to the children
6. Large fleet size enabling back-up in case of breakdowns or increased demand
7. Large driver pool to aid flexibility in cases of driver absence
8. Experienced schedulers helping you plan your routes and bus needs
9. 20 years experience dealing with schools – we've encountered the issues you face
10. Dedicated service to your school



What happens in the event of a bus breakdown?



We have more than enough vehicles to assist stranded passengers and maintain uninterrupted service, even if a vehicle requires maintenance or repairs.



Vehicle type and *Fleet size*

There are generally three types of buses used on school runs:



Do they have seatbelts?

ALL our school bus vehicles have seat belts.



Small Bus

The 12-seater 'Commuter' vehicle is a cost-effective and efficient solution for school transportation. It can be driven by anyone with a standard driver's license and offers convenient door-to-door services for students and their families.



Midsize Bus

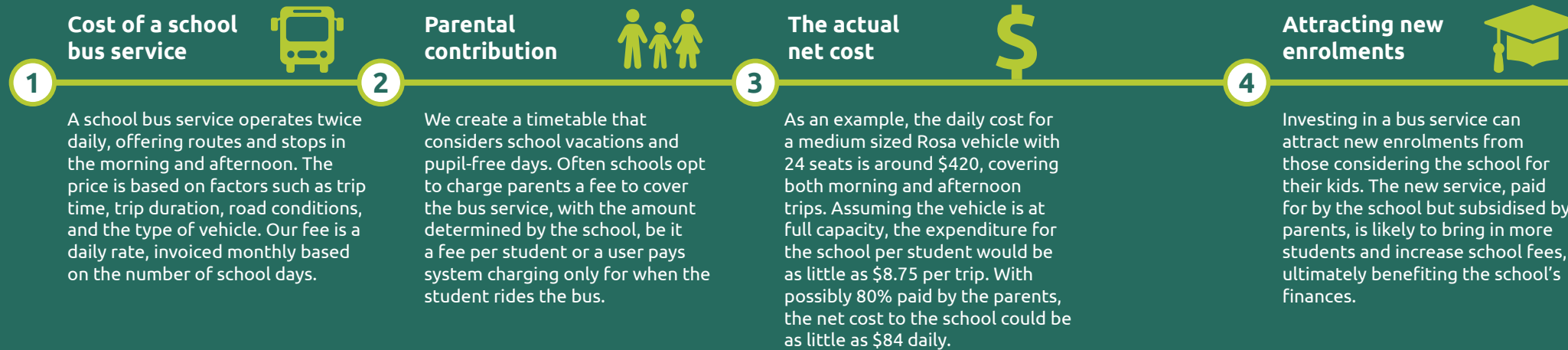
The 24-passenger 'Rosa' vehicle is commonly used for school transportation, perfect for navigating suburban roads and transporting primary school children.



Large Coach

The Coach has up to 57 seats and is perfect for transporting large groups of students, particularly where storage space is required. It is the most cost-effective option when filled close to capacity.

A bus service could end up paying for itself



“

What does your estimate encompass and are there any extra charges?

Our estimate includes all expenses such as operator salaries, fuel, maintenance and repair, and other associated costs of operating a bus. The proposed cost will be on a per-day basis, which will only be billed for the days the service is operated.



A few words from our clients...

For the past three years, Buswest has been offering four school bus services to our students and parents. During this period, Buswest has exhibited outstanding dependability and professionalism. Their drivers are punctual, courteous, and well-trained, ensuring the safety and comfort of our students on their daily commutes. The buses are consistently well-maintained and clean, contributing to a positive experience for both students and parents. The entire Australian Transit Group team have been responsive to any concerns or schedule changes. This level of service has greatly contributed to supporting us through the operation of our school's transportation needs. I highly recommend any of the Australian Transit Group operating brands particularly Buswest.

Mark Bianchini
CBC Fremantle

Buswest has provided Iona Presentation College's chartered bus routes for more than 10 years, and we have developed a good partnership with Buswest in that time. We are pleased to be able to offer this valuable service for our school's families.

Beth Garvey
Iona Presentation College

Is it possible to share
bus services with other
educational institutions?

*Absolutely, you have the option to pool
the service and share the cost among the
participating schools.*

Schools



Government Authorities

Why choose us

Your Service, Our Commitment

At Australian Transit Group, we take pride in providing secure, dependable, and safe transportation for schools. Boasting a team of more than 1,100 transport specialists, including drivers, depot personnel, and maintenance professionals, we guarantee that every engine is thoroughly maintained and running smoothly.

Over 800 buses:

Safe, reliable and well-maintained fleet

Experienced Team:

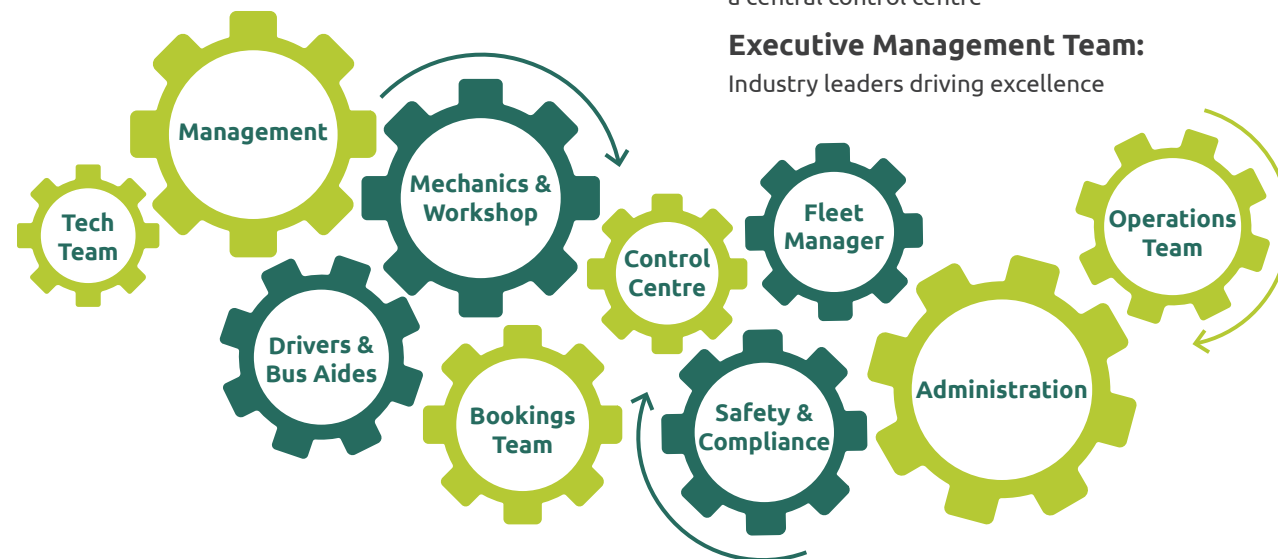
1,100 dedicated professionals, tailoring school transport solutions across Australia

Reliable Service:

Dedicated depot managers, operations support staff and a central control centre

Executive Management Team:

Industry leaders driving excellence



Want to get *started?*



Call us to arrange a meeting

Have more questions?
Get in touch and we'll provide the answers you require



(08) 9395 4444



hello@austransit.com.au



austransit.com.au

